

# YAST

고속중실형 회전유압실린더 (체크밸브 내장+근접스위치 부착 가능형)

CLOSED CENTER HYDRAULIC CYLINDER (CHECK VALVE+PROXIMITY SWITCH Type)  
 高速中実型回転油圧シリンダー / 中実回転油缸



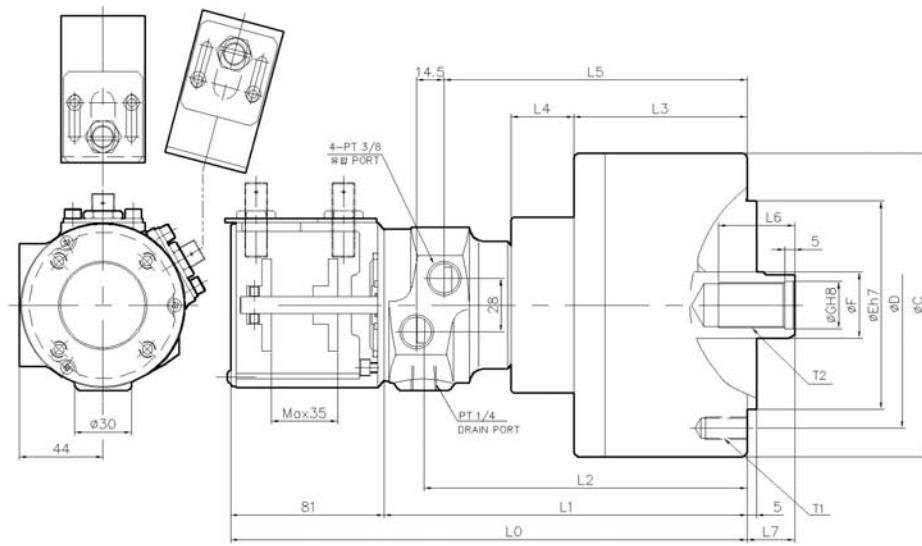
- 복합적인 구조 · 소형 경량화 · 고성능 · 고품질
- Combined Structures · Small size & Light Weight · High Performance and High Quality
- 複合的な構造 · 小型軽量化 · 高性能 高品質
- 复合结构 · 体积小, 重量轻 · 性能优, 质量好

※ 허용 최고 회전속도는 실측치에 준함.  
 ※ Maximum turning speed is based on actual measurement

## Specifications / 规格 / 仕様表 / 사양표

| Spec. 사양<br>Model 형식 | Order NO.<br>오더번호 | Cylinder Dia<br>실린더내경<br>mm | Piston stroke<br>피스톤스트로크<br>mm | Piston surface area<br>피스톤 단면적 cm <sup>2</sup> |         | Max. Draw bar pull<br>실린더 추력 KN(kgf) |                |
|----------------------|-------------------|-----------------------------|--------------------------------|--|---------|--------------------------------------|----------------|
|                      |                   |                             |                                | Push 압축  | Pull 인축 | Push 압축                              | Pull 인축        |
| YAST-100             | 2AST10            | 105                         | 20                             | 86.5   | 79.5    | 31.8(3244)                           | 29.3(2989)     |
| YAST-125             | 2AST12            | 130                         | 25                             | 132.5  | 123.0   | 48.8(4978)                           | 45.3(4621)     |
| YAST-150             | 2AST15            | 150                         | 30                             | 176.0  | 160.0   | 64.8(6610)                           | 60.0(6120)     |
| YASTL-150            | 2ASTL15S          | 150                         | 50                             | 176  | 160     | 64.8(6610)                           | 60.0(6120)     |
| YAST-200             | 2AST20            | 205                         | 35                             | 330.0  | 306.0   | 121.6(12404)                         | 112.8(11505)   |
| YAST-200S            | 2AST20S           | 200                         | 35                             | 330  | 306     | 121.6(12404)                         | 112.8(11505)   |
| YASTL-200            | 2ASTL20           | 200                         | 50                             | 330  | 306     | 121.6(12404)                         | 112.8(11505)   |
| YASTL-200S           | 2ASTL20S          | 200                         | 50                             | 330  | 306     | 121.6(12404)                         | 112.8(11505)   |
| YAST-245             | 2AST24            | 245                         | 60                             | 470.8  | 438.2   | 173.2(17671.9)                       | 161.2(16450.2) |
| YAST-250             | 2AST25            | 250                         | 60                             | 490.2  | 457.7   | 179(18400)                           | 169(17200)     |
| YAST-250S            | 2AST25S           | 250                         | 60                             | 481.5  | 450     | 180(18270)                           | 167.3(17078)   |

| Spec. 사양<br>Model 형식 | Max. operating pressure<br>최고사용유압력<br>kgf/cm <sup>2</sup> | Max. permissible speed<br>최고사용회전수<br>rpm(min <sup>-1</sup> ) | Total leakage<br>총드레인량<br>ℓ/min | Weight<br>중량<br>kg | GD <sup>2</sup><br>Moment of inertia<br>N·m <sup>2</sup> (kgf·m <sup>2</sup> ) | Matching chuck<br>적용척 |
|----------------------|---|--|---------------------------------|--------------------|--|-----------------------|
| YAST-100             | 40.8  | 6000   | 1.0                             | 7.5                | 0.49(0.05)   | CAS-06                |
| YAST-125             | 40.8  | 6000   | 1.0                             | 10.3               | 0.88(0.09)   | CAS-08, CAS-10        |
| YAST-150             | 40.8  | 5500   | 1.0                             | 13.8               | 1.47(0.15)   | CAS-10, CAS-12        |
| YASTL-150            | 40.8  | 5500   | 1.0                             | 15.5               | -  | CAS-15 이상             |
| YAST-200             | 40.8  | 5500   | 1.0                             | 22.2               | 3.62(0.37)   | CAS-15 이상             |
| YAST-200S            | 40.8  | 5500   | 1.0                             | 24                 | 0.42(0.05)   | CAS-15 이상             |
| YASTL-200            | 40.8  | 5500   | 1.0                             | 24                 | 0.42(0.05)   | CAS-15 이상             |
| YASTL-200S           | 40.8  | 5500   | 1.0                             | 26                 | -  | CAS-15 이상             |
| YAST-245             | 40.8  | 2000   | 1.0                             | 38                 | -  | CAS-40, 50, 63        |
| YAST-250             | 40.8  | 2000   | 1.0                             | 38                 | -  | CAS-40, 50, 63        |
| YAST-250S            | 40.8  | 2000   | 1.0                             | 38                 | -  | CAS-40, 50, 63        |



Dimension / 尺寸 / 寸法表 / 치수표

| Model 형식   | Item 항목 | C   | D   | E   | F  | G    | L0    | L1    | L2    |
|------------|---------|-----|-----|-----|----|------|-------|-------|-------|
| YAST-100   |         | 135 | 100 | 80  | 30 | 21   | 266.6 | 185.5 | 164.5 |
| YAST-125   |         | 160 | 130 | 110 | 35 | 25   | 276.5 | 195.5 | 174.5 |
| YAST-150   |         | 185 | 130 | 110 | 45 | 30.5 | 283.5 | 202.5 | 181.5 |
| YASTL-150  |         | 185 | 130 | 110 | 45 | 30.5 | 316.5 | 233   | 205   |
| YAST-200   |         | 245 | 145 | 120 | 55 | 37   | 307   | 226   | 205   |
| YAST-200S  |         | 245 | 222 | 120 | 55 | 37   | 289.5 | 206   | 187.5 |
| YASTL-200  |         | 245 | 145 | 120 | 55 | 37   | 336.5 | 238.5 | 220   |
| YASTL-200S |         | 245 | 222 | 120 | 55 | 37   | 286.5 | 196   | 172   |
| YAST-245   |         | 305 | 220 | 160 | 65 | 50   | 397   | 302   | 256   |
| YAST-250   |         | 314 | 282 | 160 | 65 | 46   | 397   | 302   | 256   |
| YAST-250S  |         | 305 | 275 | 160 | 65 | 50   | 328.5 | 207   | 178   |

| Model 형식   | Item 항목 | L3    | L4 | L5    | L6 | L7 max | L7 min | T1         | T2       |
|------------|---------|-------|----|-------|----|--------|--------|------------|----------|
| YAST-100   |         | 81.5  | 37 | 154   | 35 | 45     | 25     | 6-M10X19   | M20XP2.5 |
| YAST-125   |         | 91.5  | 37 | 164   | 40 | 50     | 25     | 6-M12X22   | M24XP3.0 |
| YAST-150   |         | 98.5  | 37 | 171   | 45 | 55     | 25     | 6-M12X20   | M30XP3.5 |
| YASTL-150  |         | 131   | 37 | 198.5 | 45 | 80     | 30     | 6-M12X20   | M30XP3.5 |
| YAST-200   |         | 122   | 37 | 194.5 | 60 | 69     | 34     | 6-M16X29   | M36XP4.0 |
| YAST-200S  |         | 104.5 | 37 | 177   | 60 | 69     | 34     | 12-M16     | M36XP4.0 |
| YASTL-200  |         | 137   | 37 | 209.5 | 60 | 80     | 30     | 6-M16      | M36XP4.0 |
| YASTL-200S |         | 133.5 | -  | 163.5 | 60 | 80     | 30     | 6-M16      | M36XP4.0 |
| YAST-245   |         | 166   | 45 | 249   | 67 | 85     | 25     | 6-M20X30   | M42XP3.0 |
| YAST-250   |         | 166   | 46 | 249   | 67 | 85     | 25     | 6-φ 18THRU | M42XP3.0 |
| YAST-250S  |         | 145   | -  | 174.5 | 60 | 85     | 25     | 12-M20     | M42XP3.0 |

※ 치수 및 사양은 예고없이 변경될 수 있습니다  
 ※ Specifications are subject to change without notice.